

Mobile Pedestal

FIRSTline®

Backed by a 3 year warranty

The Firstline Mobile Pedestal is backed by a 3 year warranty - giving you extra peace of mind.

Anti-tilt fifth wheel

Fitted with a fifth wheel for safety - the risk of the unit tipping over, particularly when drawers are full - is greatly reduced.



Quality Finish

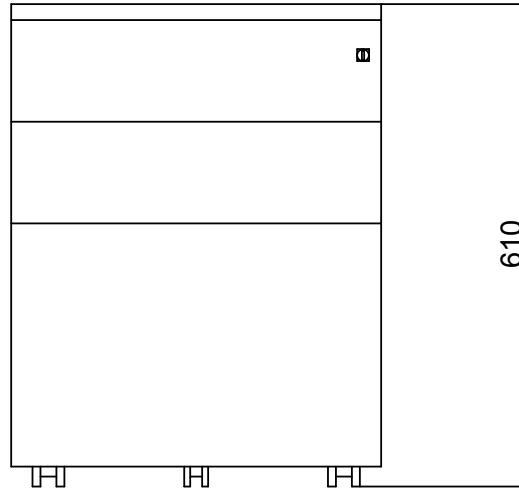
A durable, oven baked powder coat finish gives the mobile pedestal extra durability. Available in: Precious Silver Pearl, Graphite Ripple and White Satin.

All steel construction

The Firstline Mobile Pedestal features an all steel construction. This sturdy and reliable construction, using quality materials - means the unit will stand the test of time.

Full extension ball bearing runner system

Enables you to utilise all usable filing space with greater ease.



FMP3

Information

This mobile pedestal has the popular 'flush front' design - with the side pull, doing away with the need to have more traditional, protruding handles.

The full extension runners on the unit's drawers, allow you to access all of the usable filing space with ease.

Features

- Available in Precious Silver Pearl, Graphite Ripple and White Satin
- Anti-tilt fifth wheel fitted for safety
- Fitted with nylon reinforced twin wheel castors
- All steel construction
- Durable oven baked powder coat finish
- Pencil tray included
- 3 year warranty
- Secure 2000 series locking system, complete with barrel exchange capability provides peace-of-mind that items stored will be kept safe
- Full drawer extension provides easy access to all files

Specifications

| Code | Weight | Height | Width | Depth |
|------|---------|--------|-------|-------|
| FMP3 | 23.0 kg | 610mm | 460mm | 470mm |

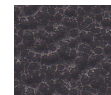
Colours



Precious Silver Pearl



White Satin



Graphite Ripple

Accreditations



Enquiries

Visit www.elitebuilt.com.au for more information.
 Head Office & Manufacturing Plant
 41 Strezlecki Ave, Sunshine
 Victoria 3020

EliteBuilt is a division of Dexion Commercial (Australia) Pty Ltd
 ABN 43 108 860 724